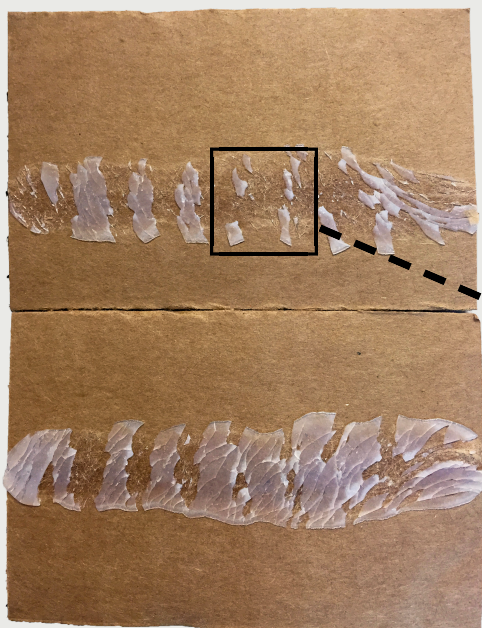


TROUBLESHOOTING CASE & CARTON FAILURES

Part 6

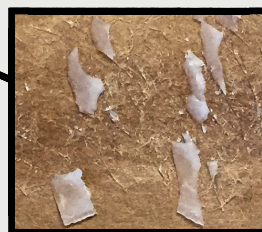
Cold Resistance Failure

WHAT IS COLD RESISTANCE FAILURE?



Cold resistance failure occurs when the glued substrate has been exposed to low temperatures below that of the adhesive service temperature. Failure does not occur during the manufacturing process, but rather during transport or storage.

You'll notice the substrate has adhesive on both sides of the substrate as well as a cracking, brittle appearance, indicating cold resistance failure.



SOLUTION



Work with an adhesive supplier to identify an alternative adhesive that can withstand cold during storage and shipping

