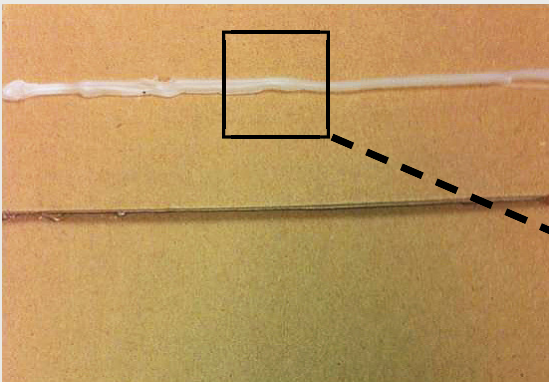


TROUBLESHOOTING CASE & CARTON FAILURES

Part 4

Poor Compression

WHAT IS POOR COMPRESSION?

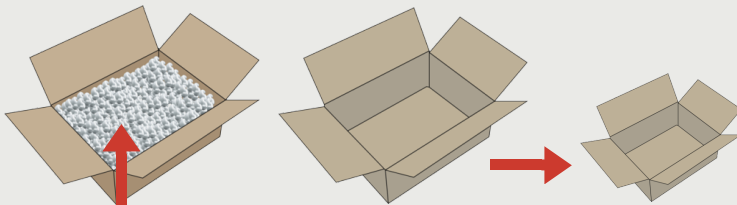


Failure due to poor compression occurs when there is inadequate compression between the substrates to flatten the adhesive bead while in its molten state. This can easily be confused with being an open time issue.

Observing the adhesive bead, it is not flattened and appears on one side of the substrate only.



SOLUTIONS



Investigate increasing back pressure of packaging by adding more filling or decreasing box size



Ensure proper timing if using anvil, or other motorized compression sections